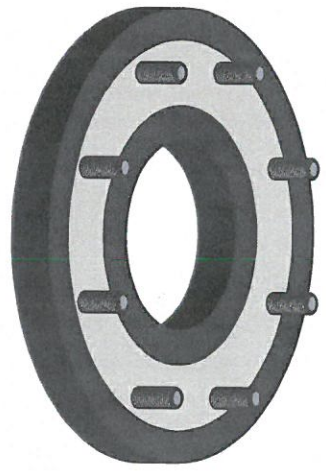
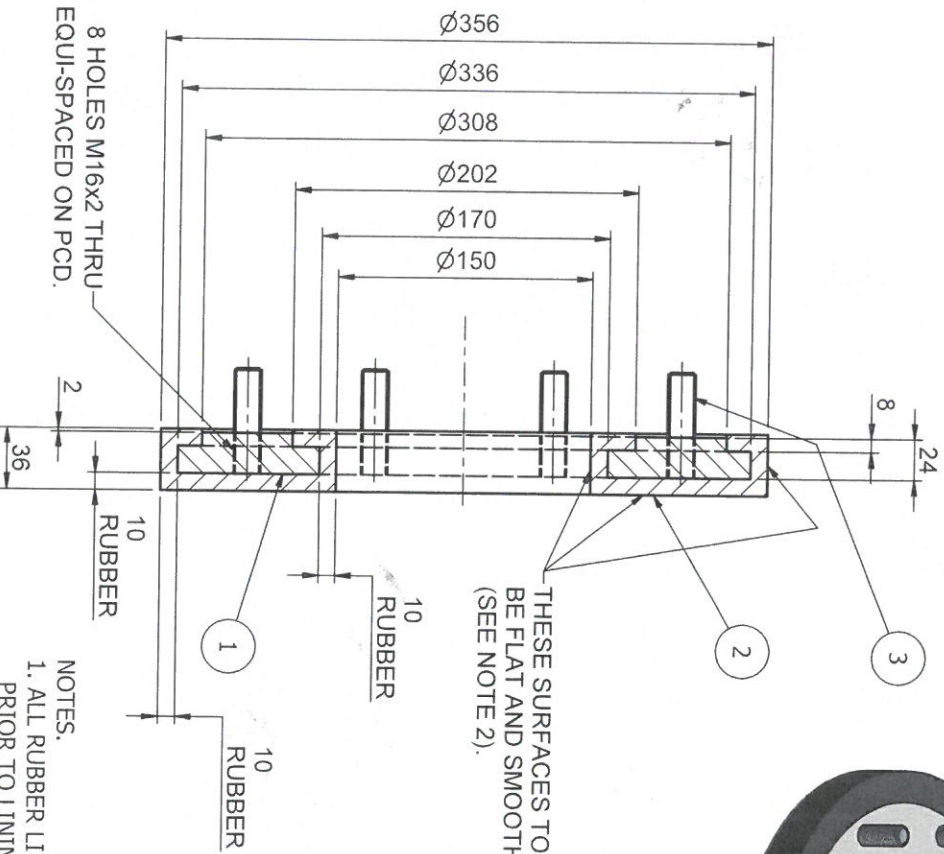
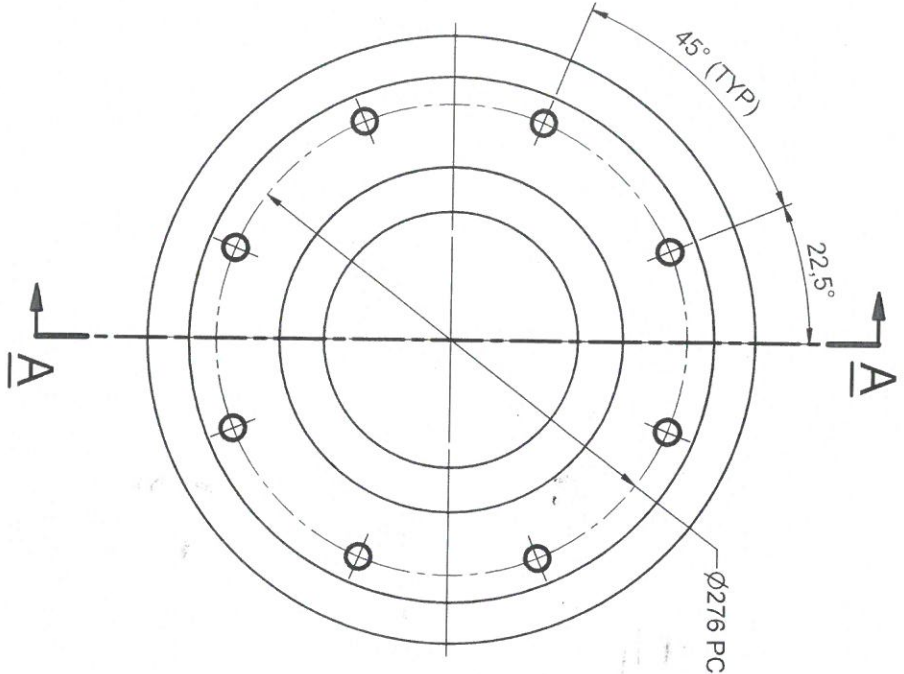


ITEM	ITEM QTY	DESCRIPTION	STOCK No.	MASS	MATERIAL
1	1	BS EN 10051 : Hot Rolled Plate		10.74 kg	BS EN10025-S275JR
2	1	10mm RUBBER LINING		1.36 kg	Rubber
3	8	M16 x 2 x 60 Long Stud		0.09 kg	Steel, Mild



SECTION A-A

- NOTES:**
1. ALL RUBBER LINED SURFACES TO BE SHOT BLASTED, PRIOR TO LINING OF 10mm THICKNESS.
 2. USE A MOULD TOOL TO ACHIEVE FLAT/SMOOTH SURFACES.

REV	DATE	ISSUED FOR CONSTRUCTION	AMENDMENT DETAILS	EGP	BY
3	29/10/2014	RUBBER LINING NOTES ADDED		-	CDS
2	12/11/2013	PROFILE REVISED		-	KK
1	19/07/2013	RE DRAWN		-	KK
0	03/05/2013	ISSUED FOR CONSTRUCTION		-	TP

GENERAL NOTES:
 REMOVE ALL SHARP EDGES AND BURS
 GENERAL TOLERANCES 0.0 = 0.05mm
 0.00 = 0.025mm
 TOLERANCE ON FLAME PROHIBITED
 DIMENSIONS
 +0.1mm FOR UP TO 25mm PLATE
 +0.2mm FOR OVER 25mm PLATE
 DO NOT SCALE. IF IN DOUBT ASK!



McLanahan UK Ltd
 Unit 15, Newmarket, 1990
 Tel: +44 (0) 1920 562489

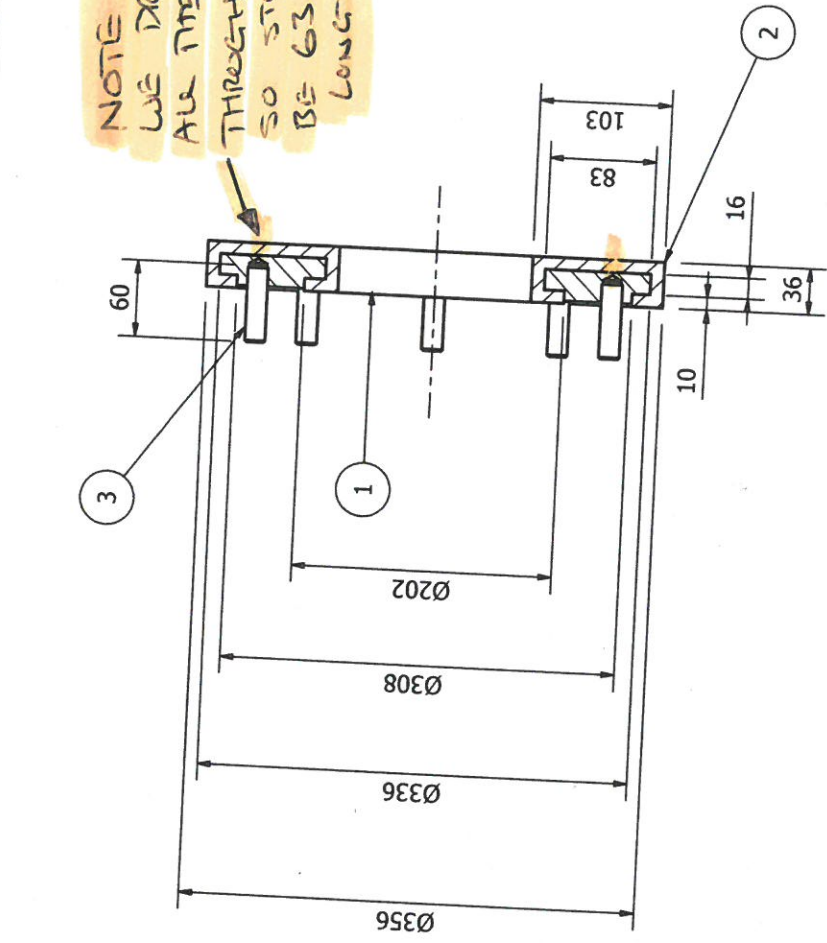
Finished Item Mass	12.86 kg	Sheet No.	1 of 1	Scales	
<p><small>This drawing is the property of McLanahan and shall not be used or copied for any other purpose without the written consent of McLanahan. It is to be used for the manufacture of the product only and shall not be used for any other purpose. The user shall be responsible for ensuring that the drawing is used for the correct product and that the correct version is used. The user shall be responsible for ensuring that the drawing is used for the correct product and that the correct version is used.</small></p>					
MANUFACTURING DRAWING		Drawn By	C Stockley	Checked By	A Turner
		Approved By	A Turner		
1st Issue Date	02/07/2013	Sheet Size	A3	Drawing No.	505112
STOCK No. FLOW SEALING PLATE					Part No. / Model Ref. 505112
					Revision 3

505112
 PART/ROW NUMBER

FLOW SEALING PLATE ASSEMBLY

ZONE/REV	DESCRIPTION	DATE	APPROVED
1		19/12/2012	
2	PROFILE REVISED	12/11/2013	

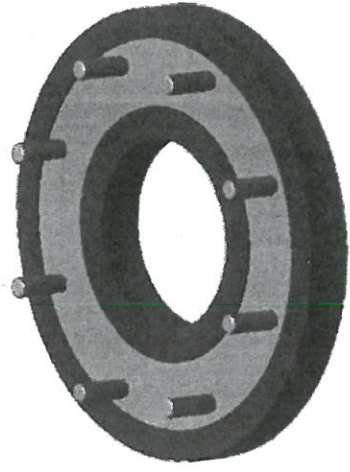
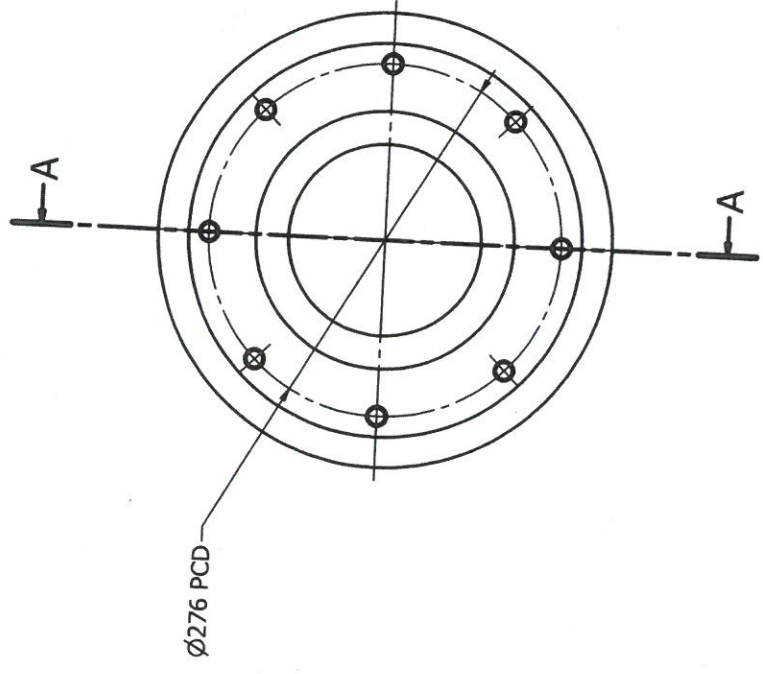
NOTE
 WE DRILL
 ALL THE WAY
 THROUGH
 SO STUD WILL
 BE 63MM
 LONG.



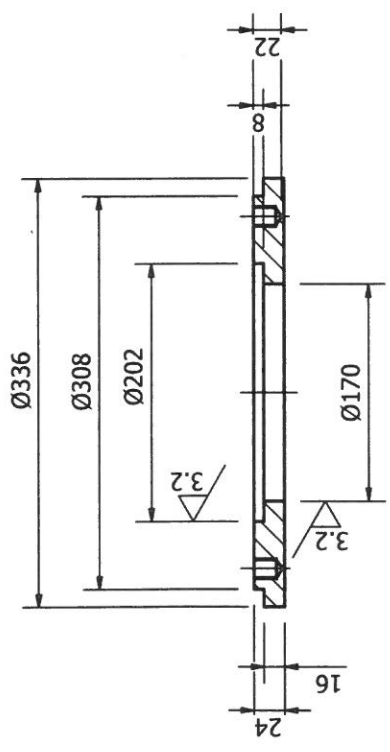
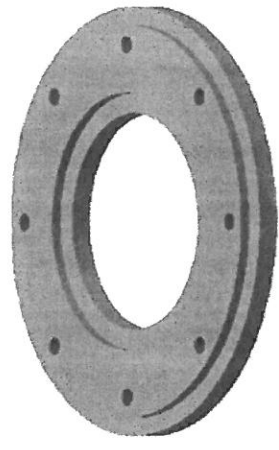
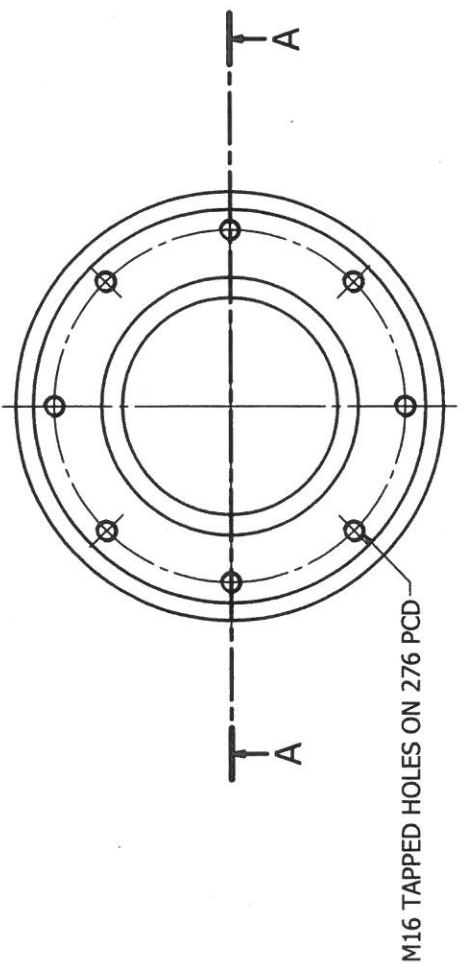
A-A (1:4)

NOTES.
 1. ALL RUBBER LINED SURFACES TO BE SHOT BLASTED.
 PRIOR TO LINING OF 10mm THICKNESS.

ITEM	QTY	PART NUMBER	DESCRIPTION
1	1	505041	FLOW SEALING PLATE
2	1	505111	MEMBRANE, FLOW SEALING RUBBER LINING
3	8	M16 STUD	Double End Stud



REVISION HISTORY				
ZONE	REV	DESCRIPTION	DATE	APPROVED
	1		19/12/2012	
	2	PROFILE REVISED	12/11/2013	



PARTS LIST			
ITEM	QTY	PART NUMBER	DESCRIPTION
1	1	505041	FLOW SEALING PLATE

A-A (1 : 4)